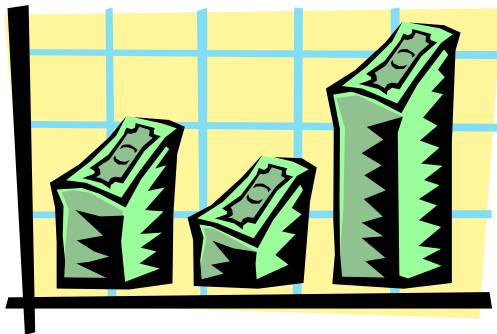


## WHAT DETERMINES WHETHER REQUESTS ARE FUNDED?

Fayette County Board of DD will fund family requests if:

- \* Family is eligible for services
- \* County has funds available
- \* Items or services cannot be funded by other sources
- \* Request is consistent with county board's plan and Family Support Services philosophy



For more information about FSS eligibility and services, please contact the Family Support Services Coordinator, Robyn Runnels, at:

### FAYETTE COUNTY BOARD OF DD

1330 ROBINSON ROAD  
WASHINGTON C.H., OHIO

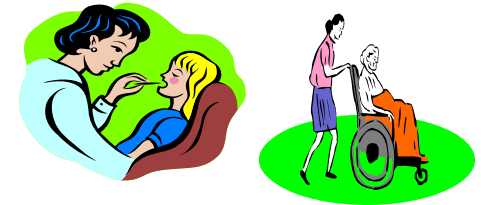
43160

740-335-7453

FAX 740-335-2185



A program of supports  
for families...



who care for an  
individual with  
developmental disabilities...

at home



# FAMILY SUPPORT SERVICES

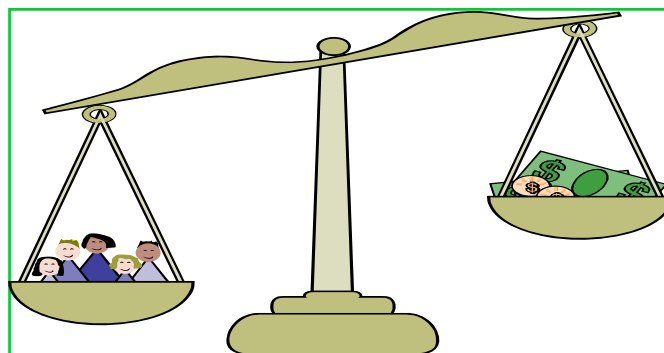
## WHAT IS FAMILY SUPPORT SERVICES (FSS)?

Family Support Services is a program that provides supports, services and help to:

- \* Enable family to care for their family member with disabilities at home
- \* Enhance the quality of life for that family, including the individual with developmental disabilities

### WHO PROVIDES THE SERVICE?

The FSS program is administered through the Fayette County Board of DD. The funds are provided through state legislature and distributed by the Ohio Department of Developmental Disabilities.



### HOW MUCH WILL FSS COST MY FAMILY?

Families are required to make co-payments based on the sliding scale below:

<u>Annual Taxable Income</u>	<u>Co-Payment</u>
\$27,258 or less	0%
\$27,259 to \$37,759	10%
\$37,760 to \$48,260	30%
\$48,261 to \$62,261	50%
\$62,262 to \$79,762	75%
\$79,763 and above	100%

### WHO CAN RECEIVE FAMILY SUPPORT SERVICES?

If you have a family member with mental retardation or other developmental disability living at home, he or she may be able to receive FSS. The family member with disabilities must be **ELIGIBLE** for Fayette County DD services, even if he or she is not receiving county board assistance.

### WHAT ITEMS AND SERVICES ARE PROVIDED?

- \* Respite care by specially trained providers or persons chosen by the family



- \* Adaptive equipment
- \* Home modifications to accommodate the family member with disabilities



- \* Special diets
- \* Other services individualized to each family's needs such as counseling, wheelchair repair, educational software, television closed captioning, sign language books, exercise bicycles and more

